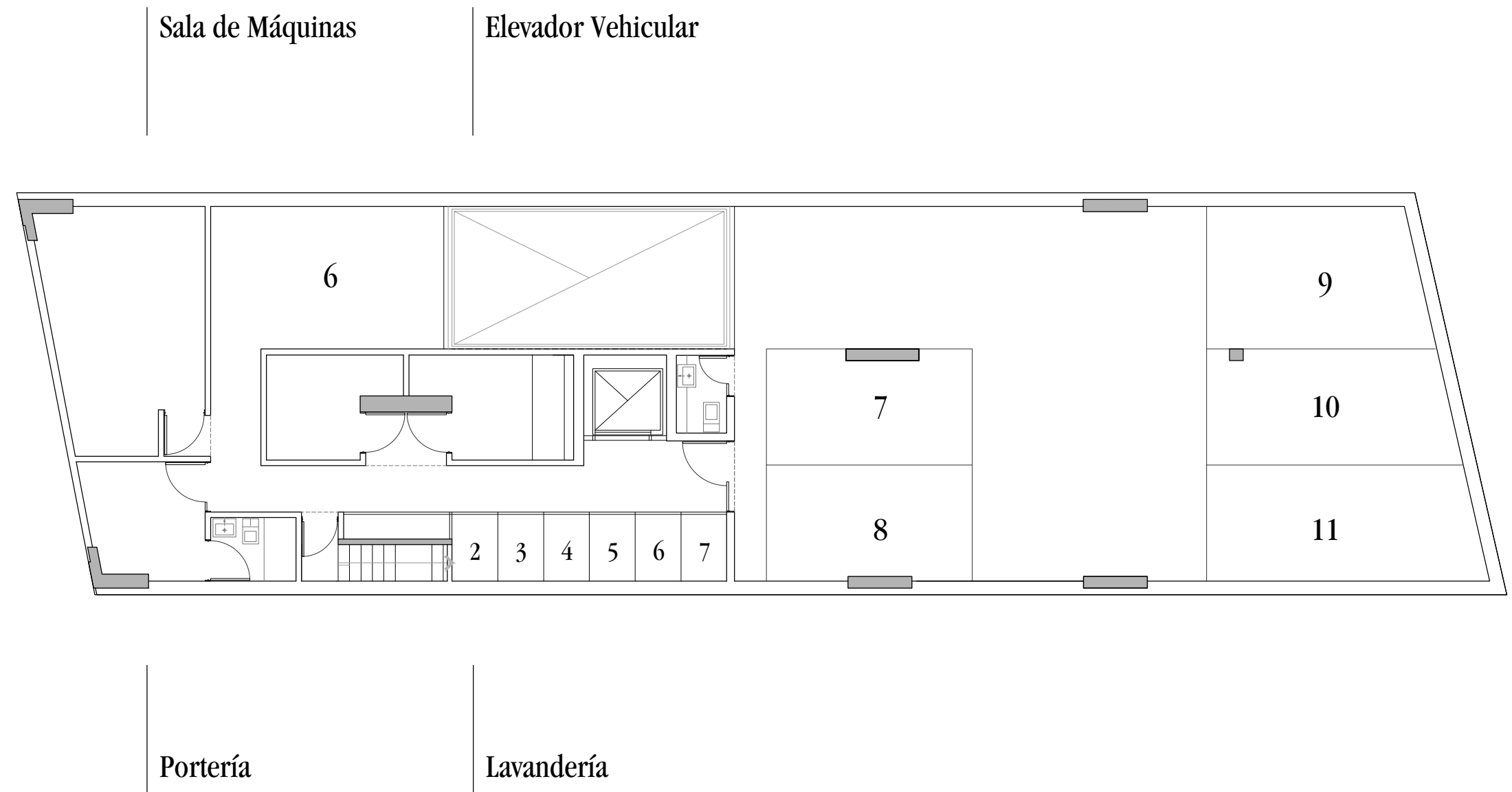


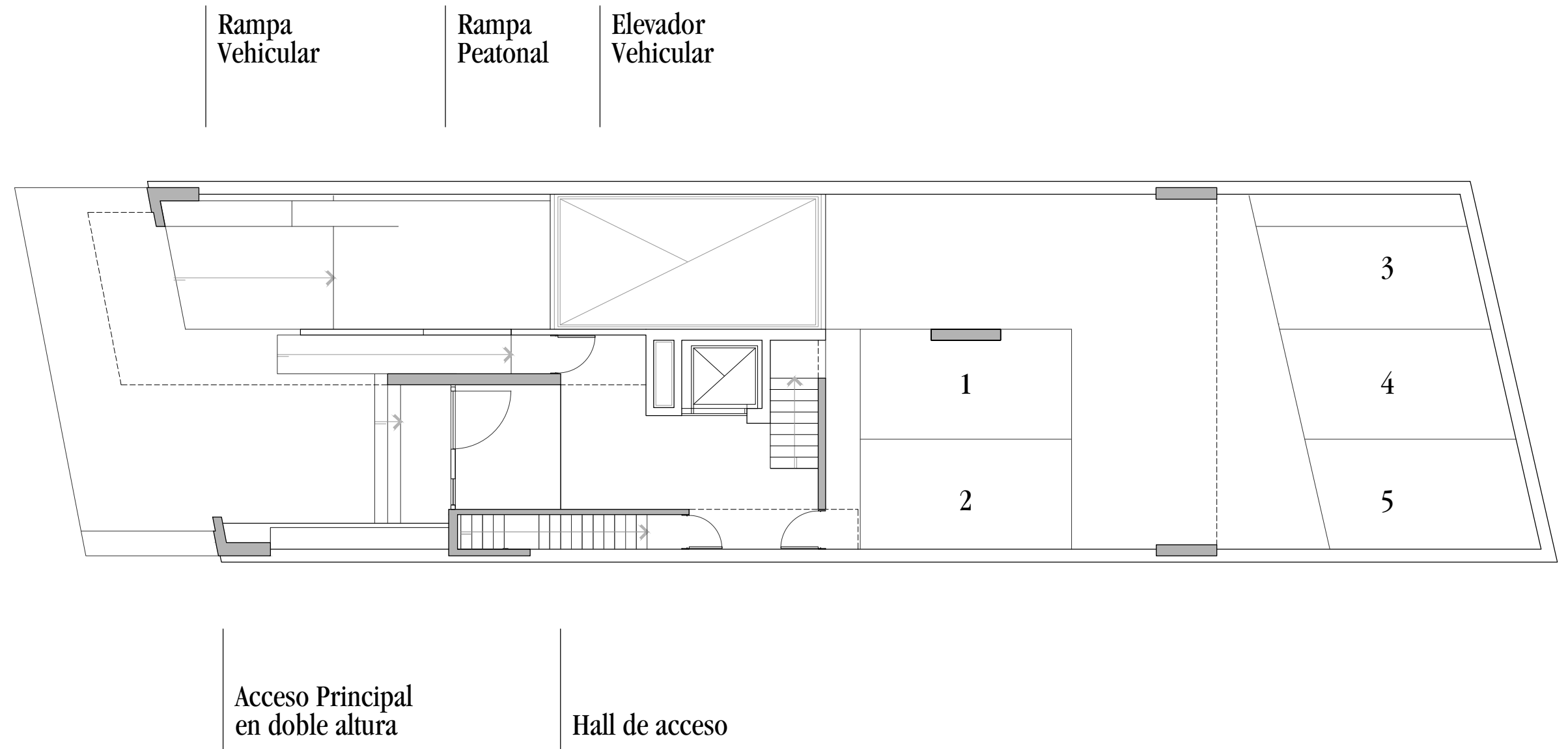
W-Ugarteche

Plantas

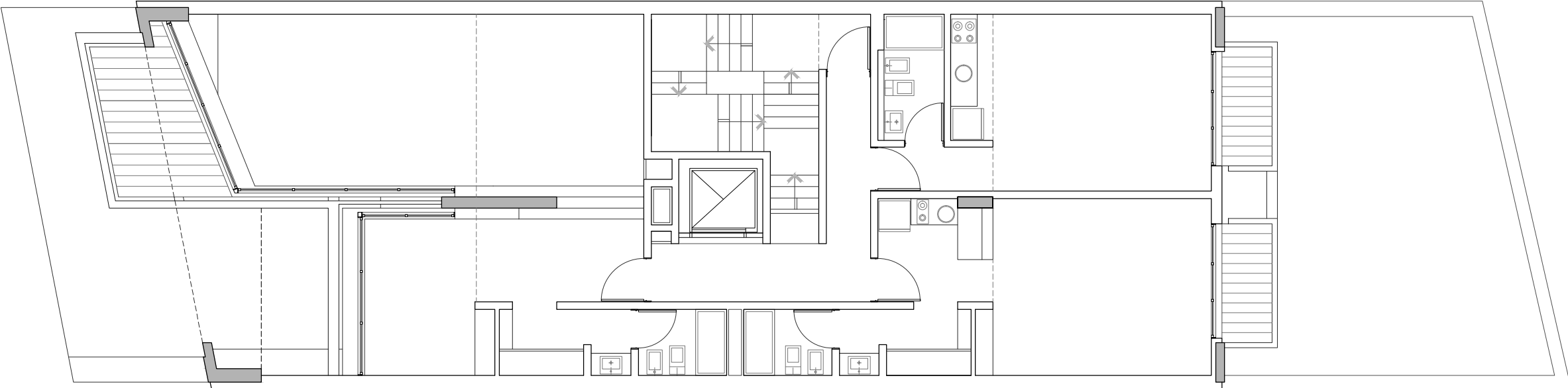
Subsuelo



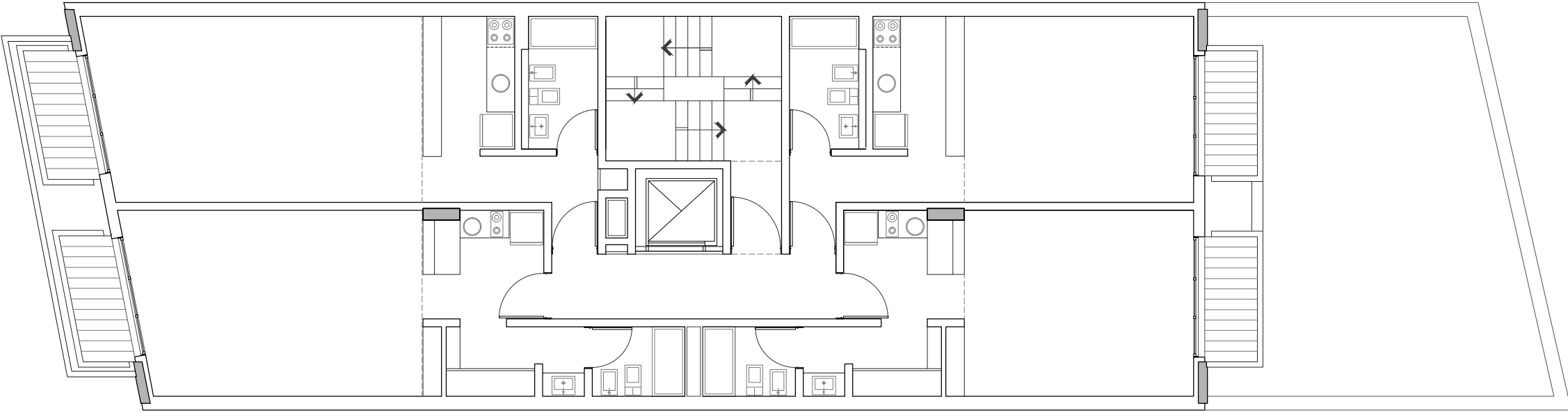
Planta Baja



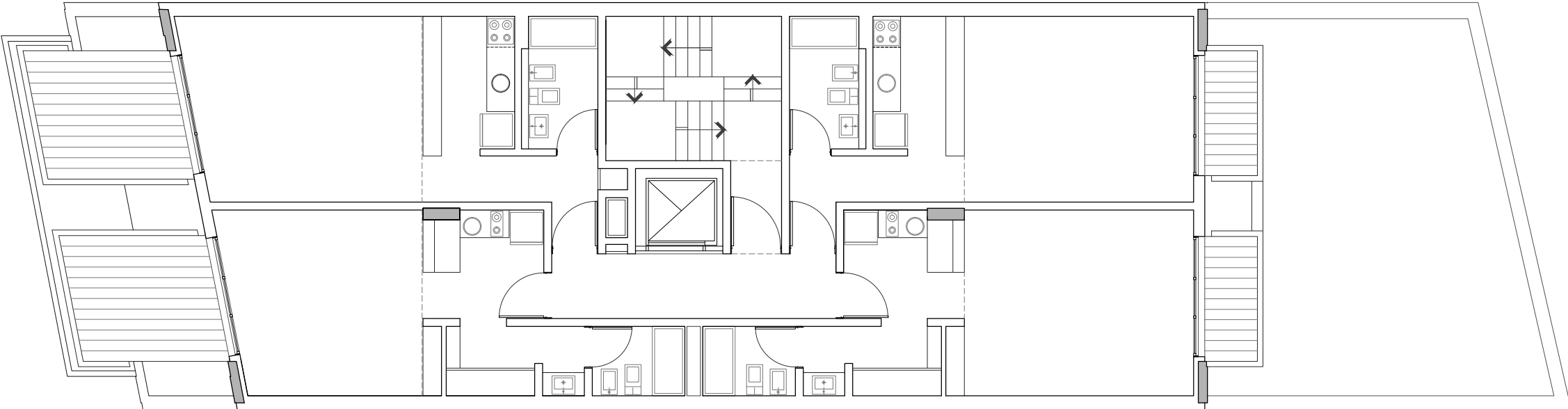
Primer Piso



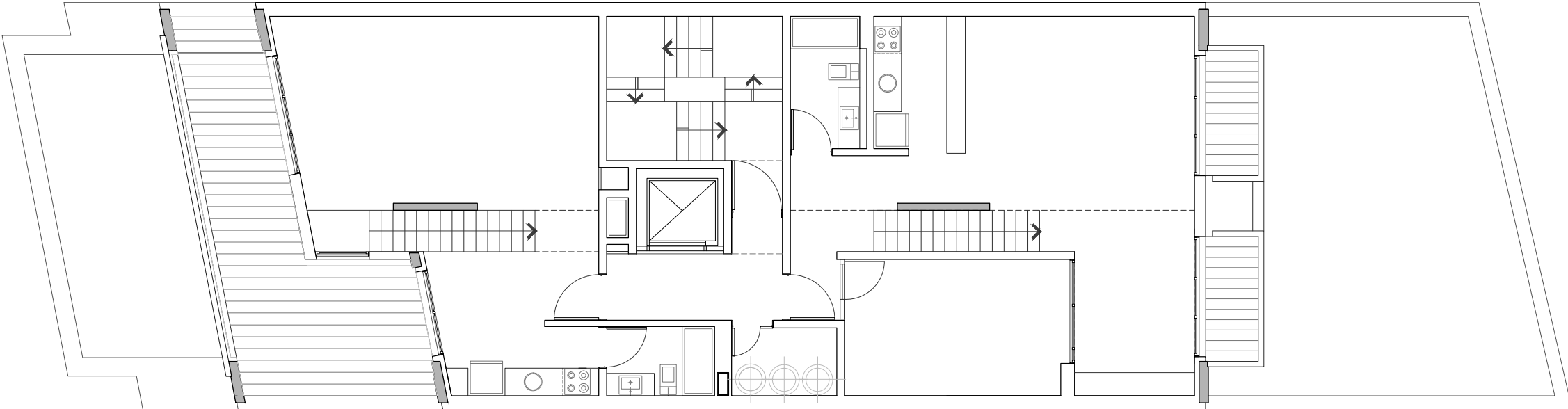
Segundo a
Séptimo Piso



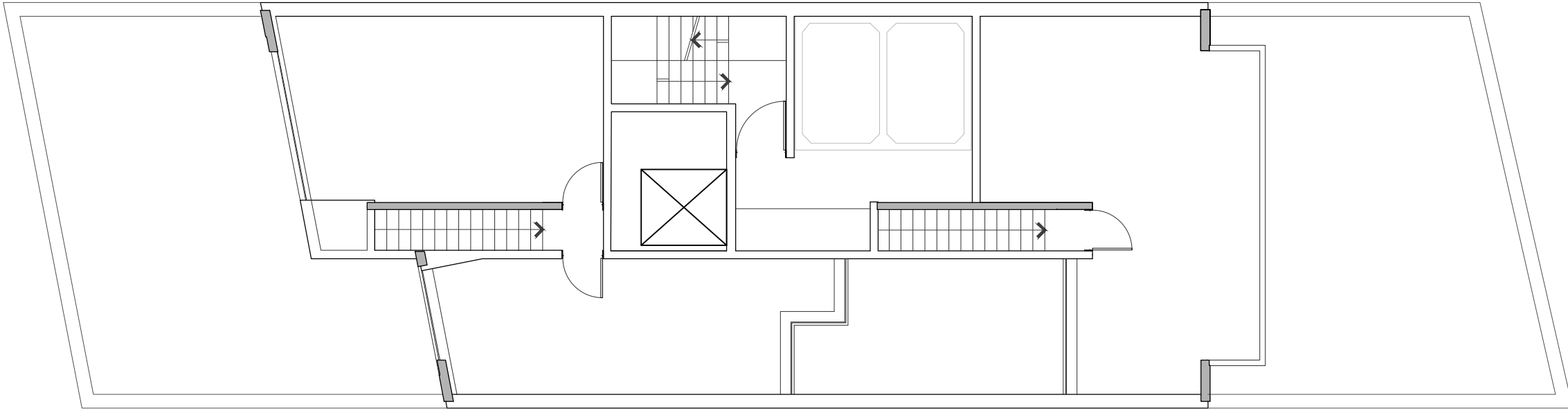
Octavo Piso

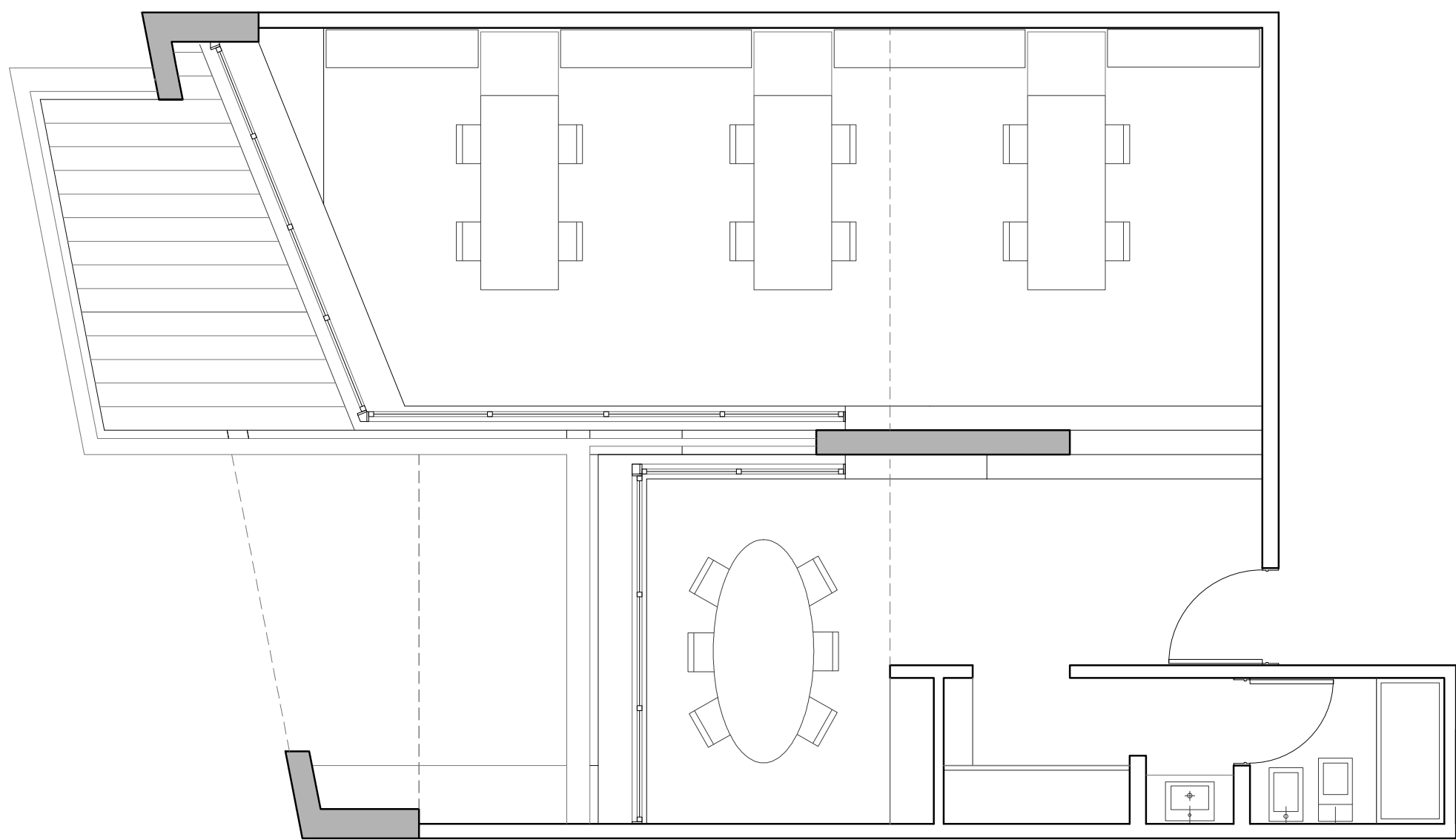
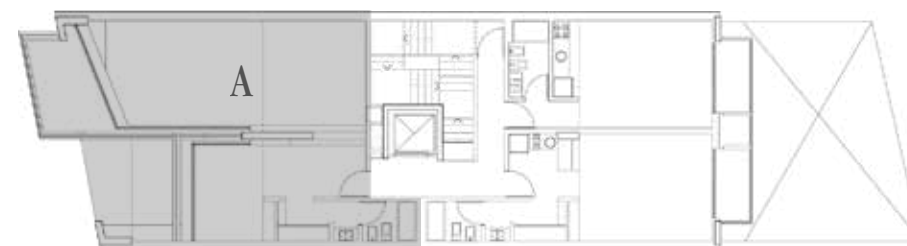


Noveno Piso



Azotea





Primer Piso

75.40 m² cubiertos

10.30 m² semicubiertos

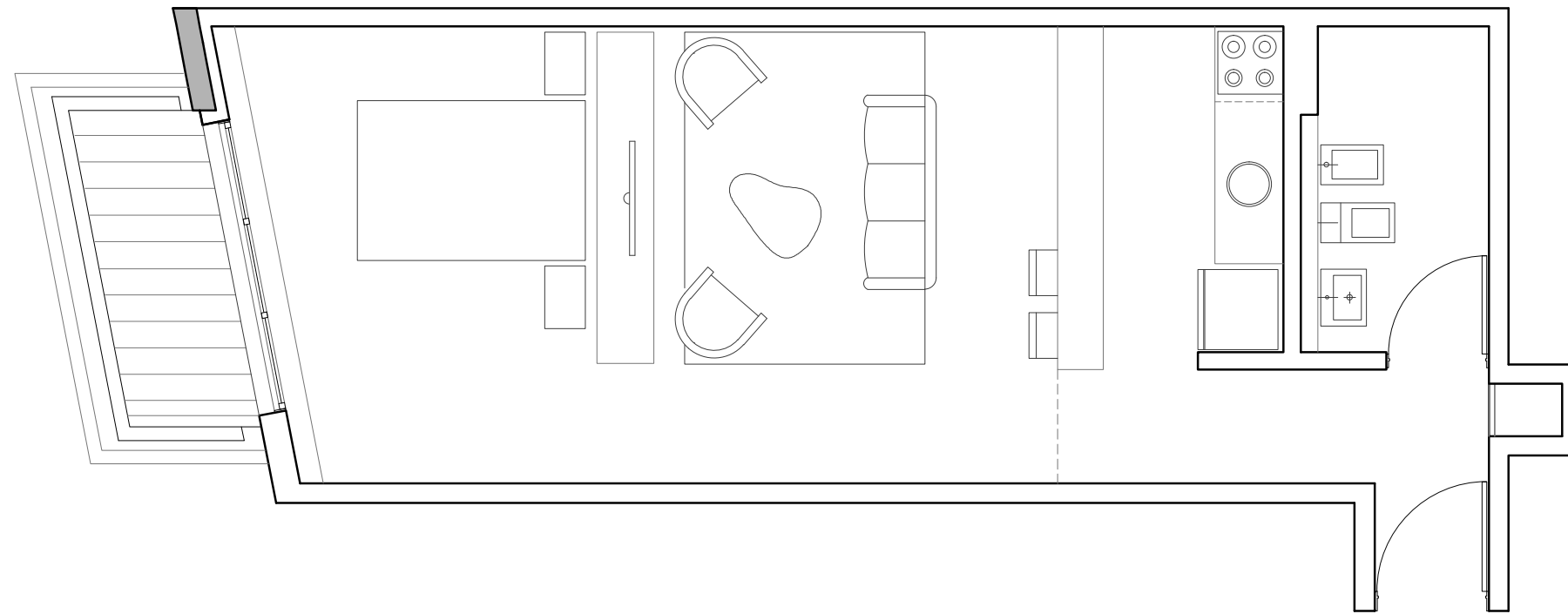
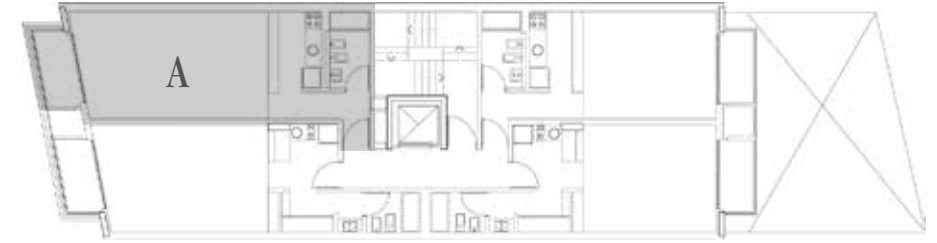
85.70 m²

Segundo a Séptimo Piso

49.00 m² cubiertos

04.30 m² semicubiertos

53.30 m²

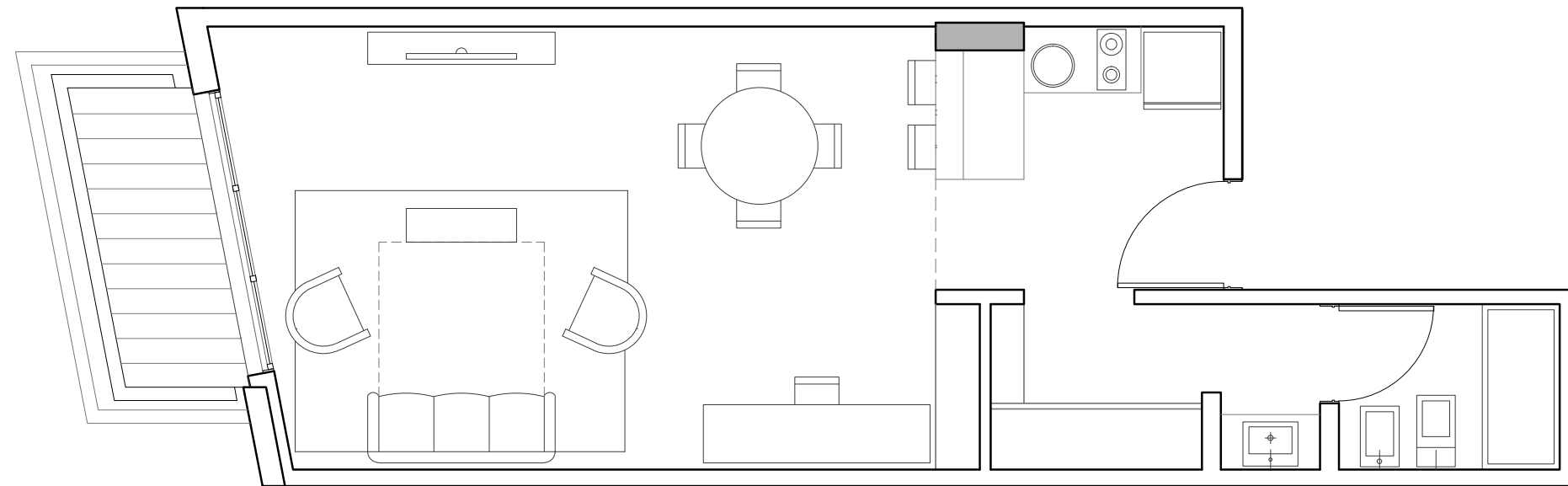
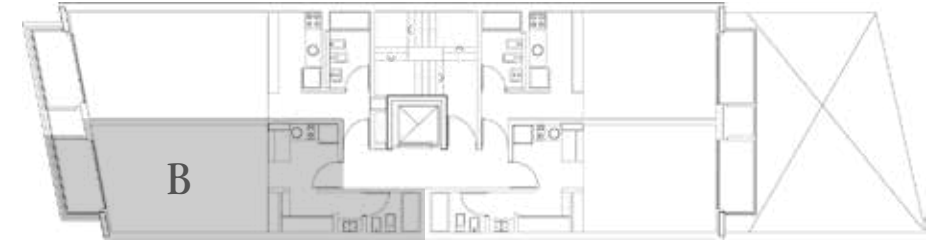


Segundo a
Séptimo Piso

43.80 m² cubiertos

04.20 m² semicubiertos

48.00 m²

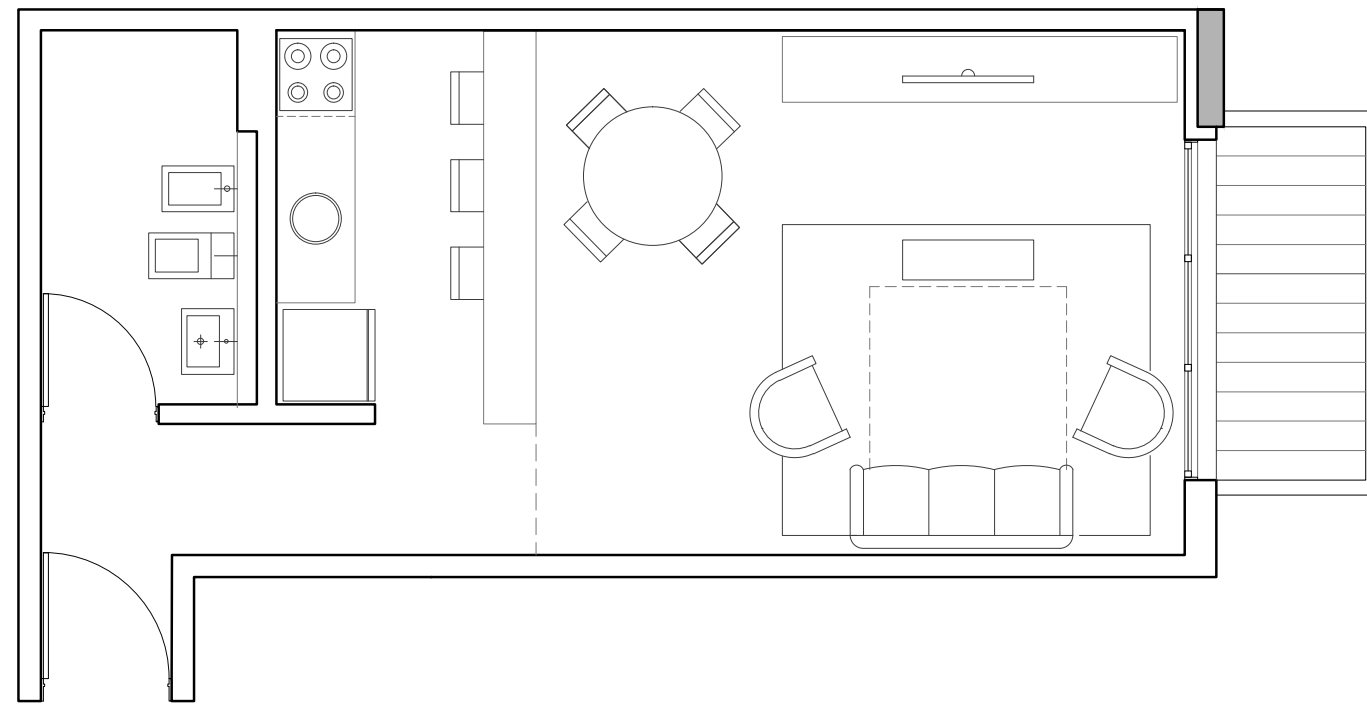
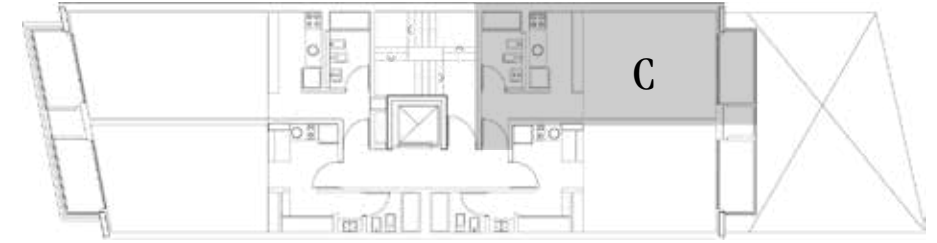


Segundo a Octavo Piso

40.00 m² cubiertos

04.00 m² semicubiertos

44.00 m²

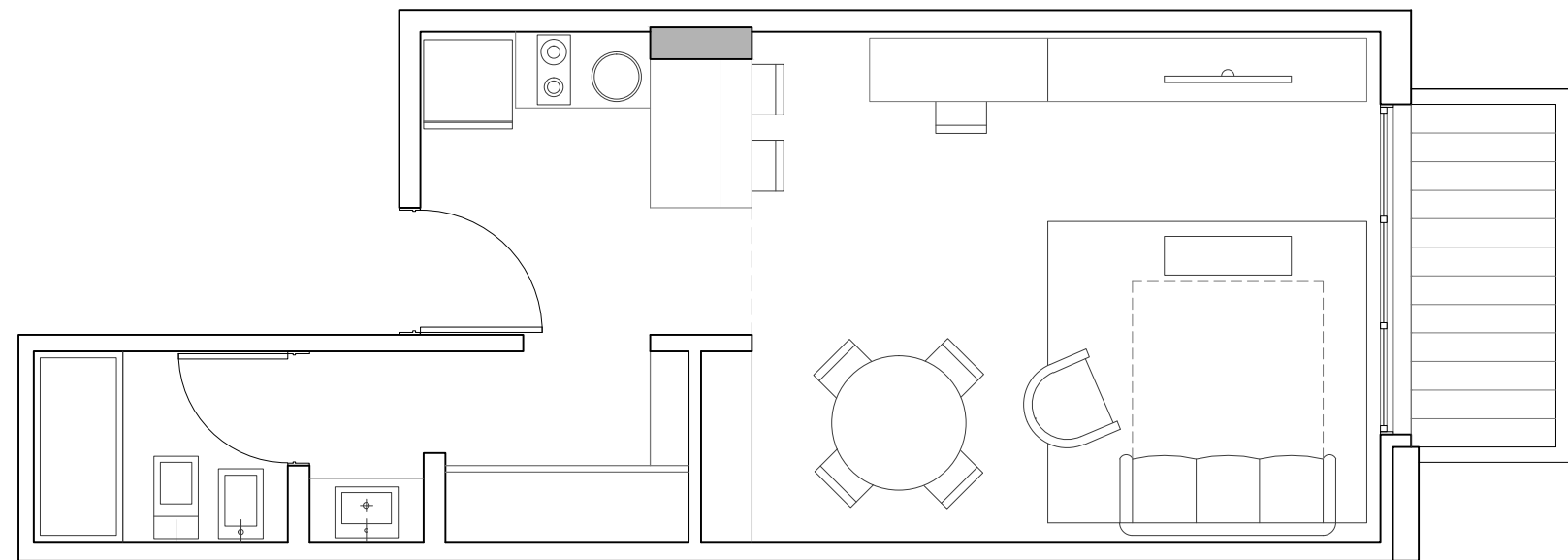
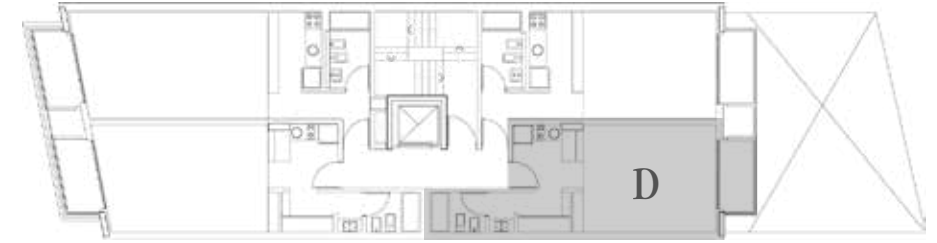


Segundo a
Octavo Piso

39.00 m² cubiertos

04.00 m² semicubiertos

43.00 m²

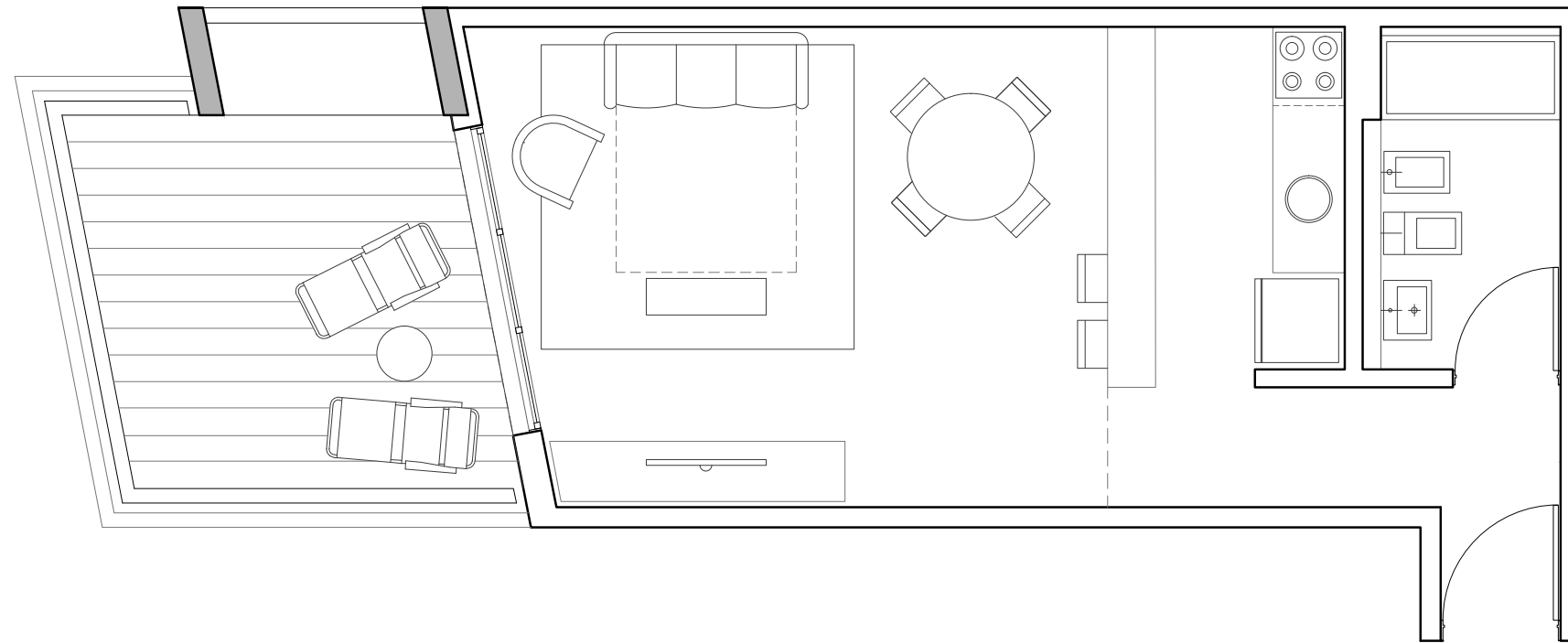
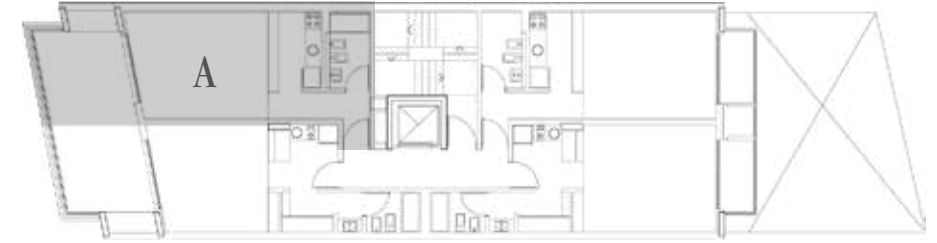


Octavo Piso

40.00 m² cubiertos

11.35 m² semicubiertos

51.35 m²

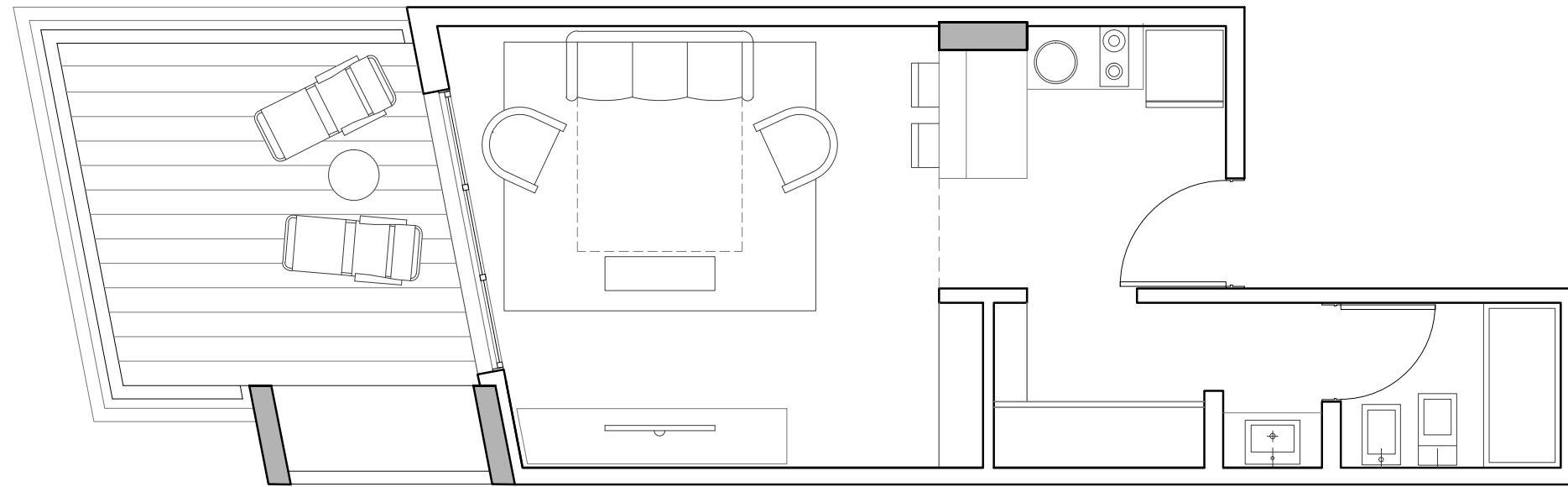
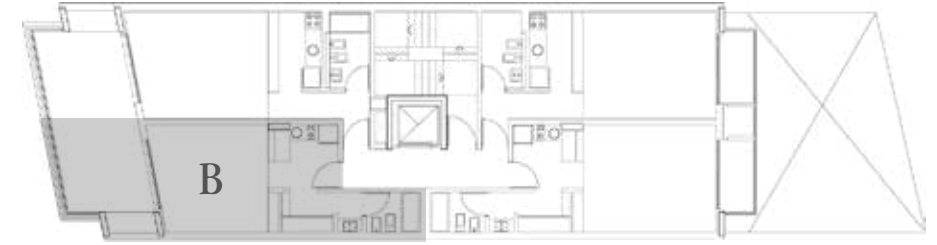


Octavo Piso

35.40 m² cubiertos

11.20 m² semicubiertos

46.60 m²

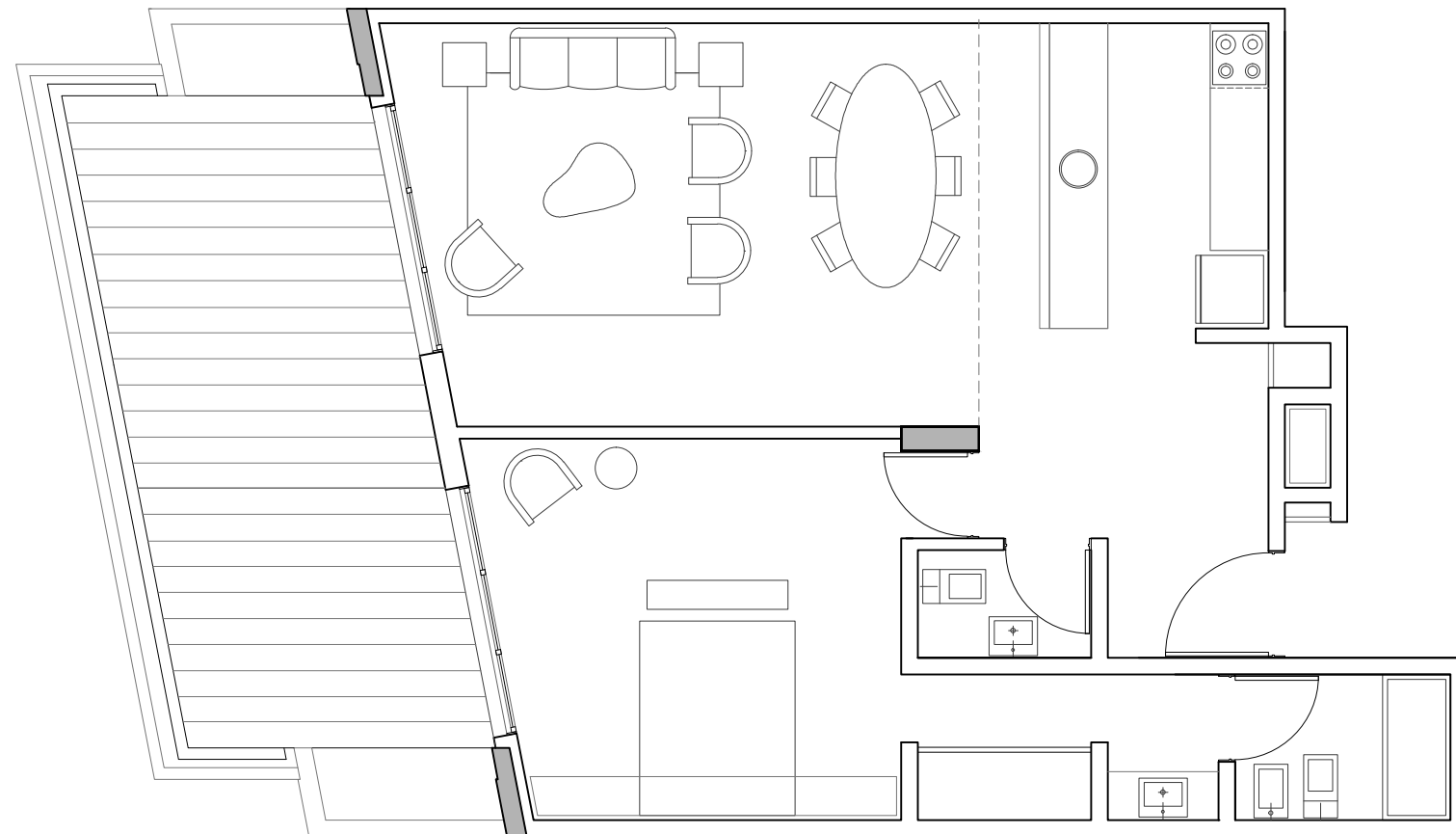
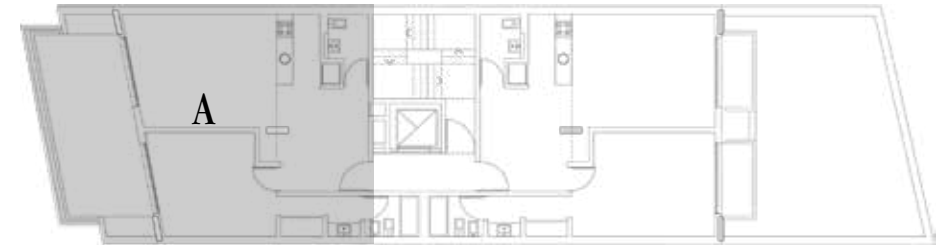


Octavo Piso
2 Ambientes

78.00 m² cubiertos

26.75 m² semicubiertos

104.40 m²

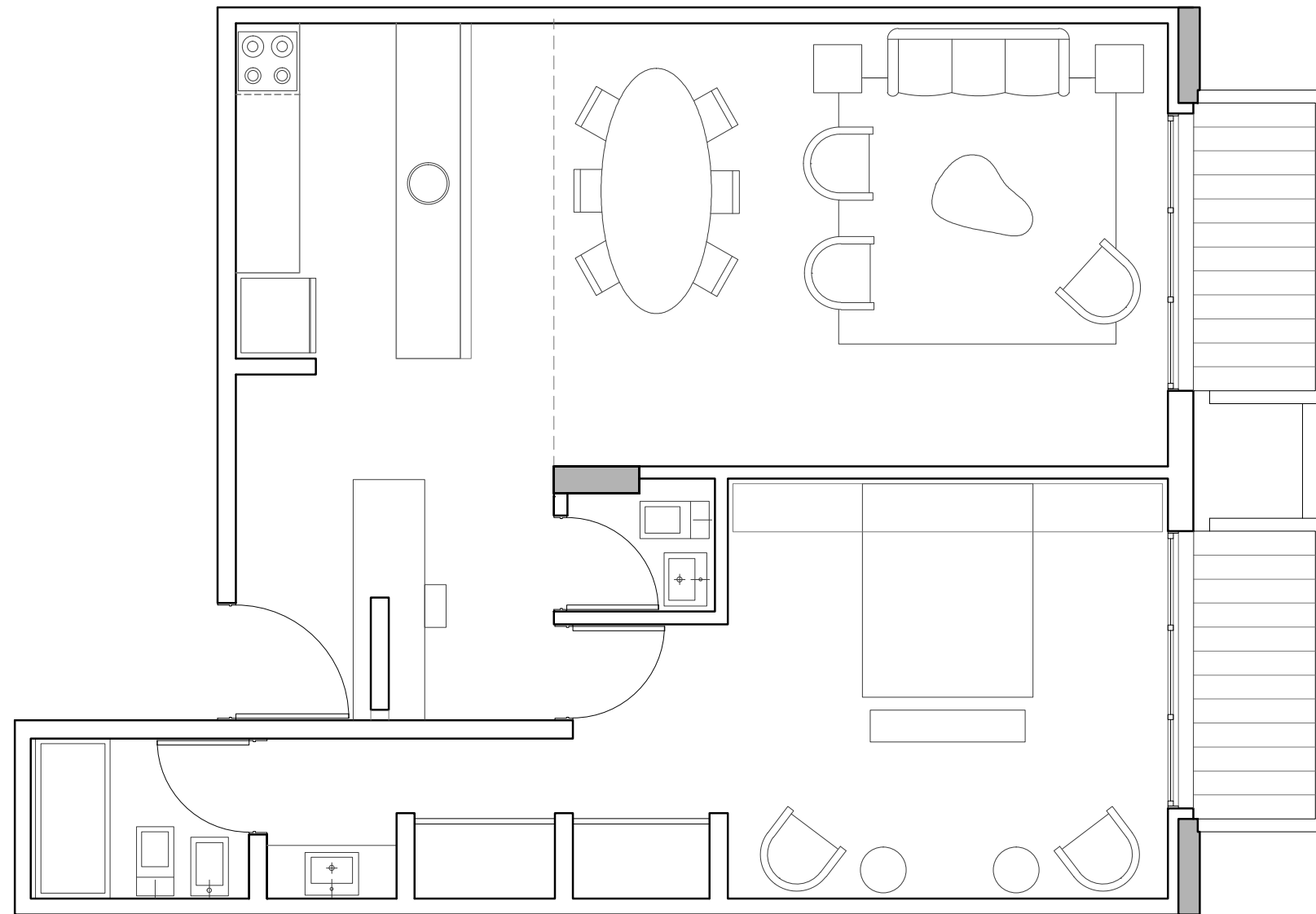
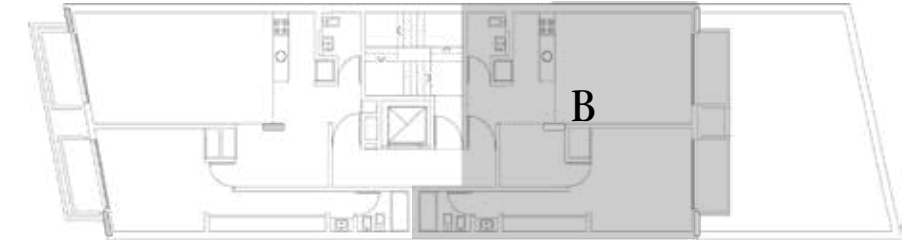


Octavo Piso
2 Ambientes

80.48 m² cubiertos

08.00 m² semicubiertos

88.48 m²

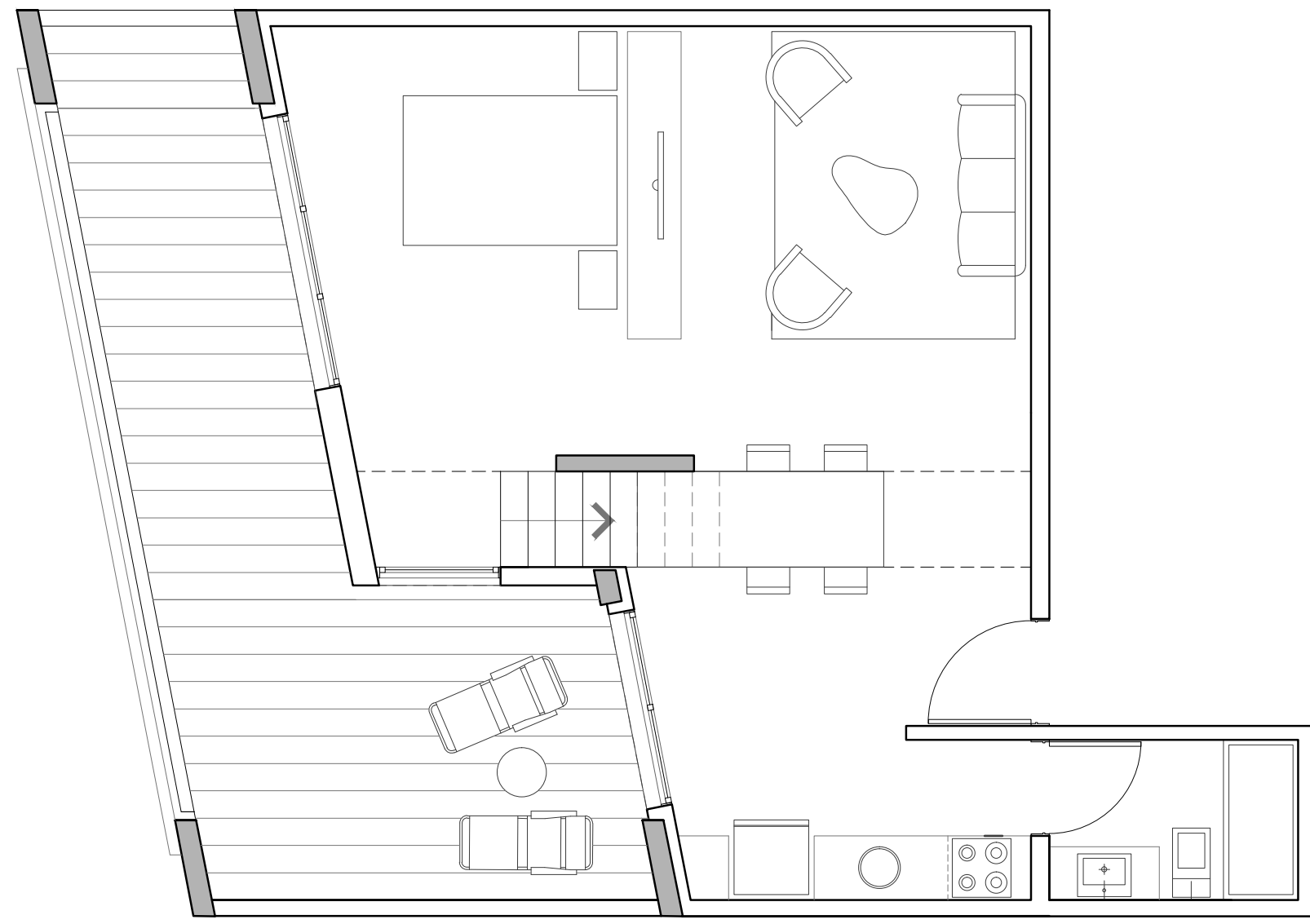


Noveno Piso

54.45 m² cubiertos

80.20 m² semicubiertos

134.65 m²

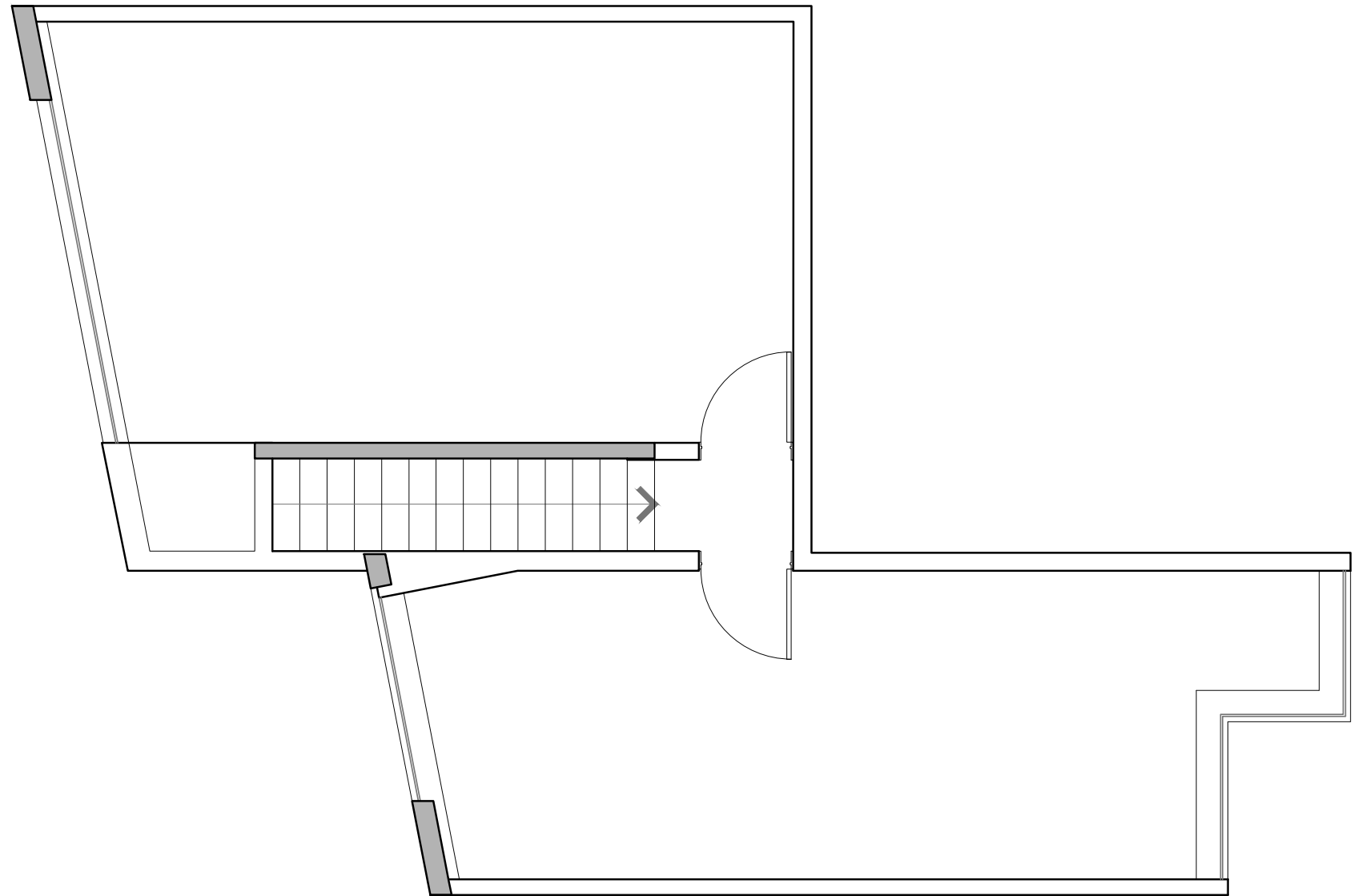
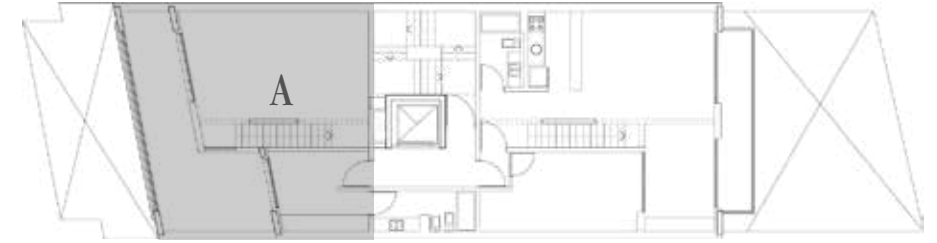


Noveno Piso

54.45 m² cubiertos

80.20 m² Patio-Balcón-Terraza

134.65 m²

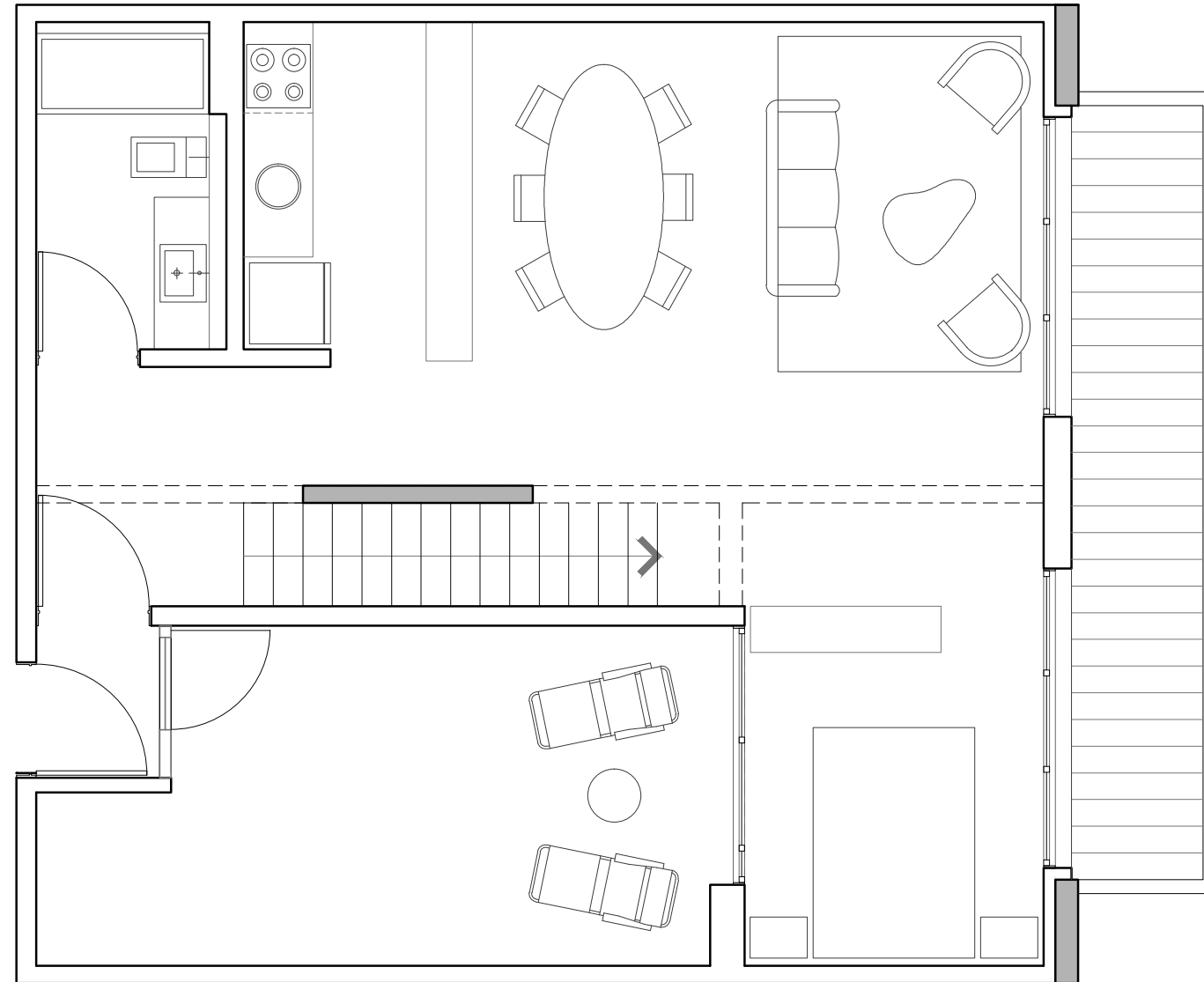


Noveno Piso

59.70 m² cubiertos

67.52 m² Patio-Balcón-Terraza

127.22 m²

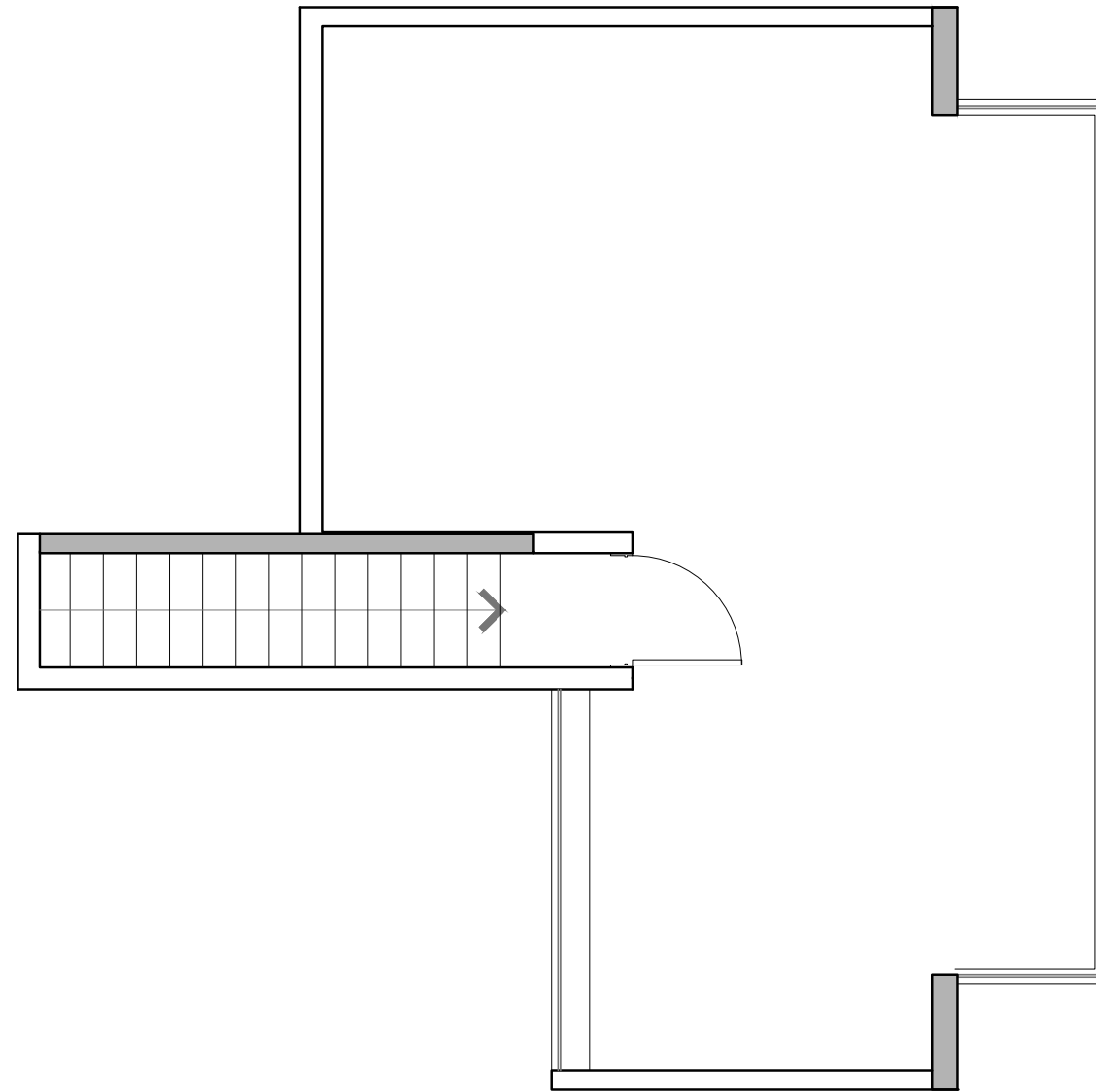
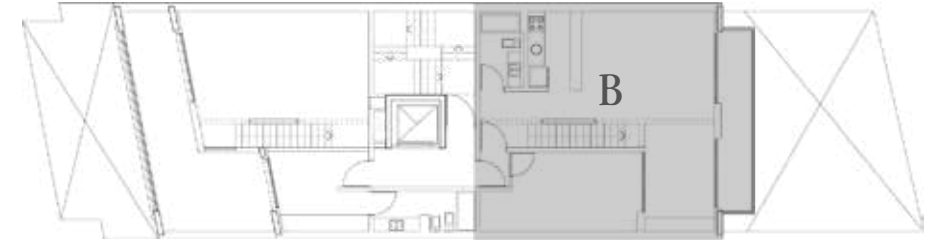


Noveno Piso

59.70 m² cubiertos

67.52 m² Patio-Balcón-Terraza

127.22 m²



Nota

Todas las imágenes, planos, dimensiones, superficies, descripciones y características indicadas son meramente referenciales e ilustrativas y podrán sufrir modificaciones sin previo aviso. Las medidas y superficies de cada unidad funcional surgirán del respectivo título y planos finales aprobados por las autoridades competentes.

PROYECTO Y DIRECCIÓN

CsO
ARQUITECTURA

ASESORAMIENTO COMERCIAL

MP LIFESTYLE

info@w-ugarteche.com.ar / Ventas: mpasman@w-ugarteche.com.ar / Cel: 11 3344 5572



w-ugarteche.com.ar